

Blue Mountain Birch Cove Lakes under immediate threat!

Your help is needed to protect what could be the **largest urban park** in all of Canada!

Blue Mountain Birch Cove Lakes is a long promised but yet-to-be-delivered 2,000 hectare park located directly behind Bayers Lake Shopping Centre, in between Timberlea and Kingwood, and just over the hill from Clayton Park. It features a lovely **forest** and over a dozen **lakes**, a complete **canoe loop**, and **habitat for wildlife**, including a number of **endangered species**. Few cities in the world have such an amazing wilderness so close to the core of the city. It's been ten long years since Halifax Regional Municipality promised in its 2006 Regional Plan to create a large natural park at Blue Mountain Birch Cove Lakes. **So far the city has done nothing to fulfill that promise.**

Now, Halifax Regional Council is seeking public feedback on a terrible new facilitator's report regarding negotiation of the boundaries for the Regional Park. Shockingly, the report **proposes allowing a huge sprawling suburb to be built** on the most environmentally sensitive lands, precisely where HRM's new park is supposed to be - **all around the Birch Cove Lakes**. If this flawed report is adopted by Council it will kill the beautiful dream of this world-class park for Halifax forever!

The facilitators report will be presented to HRM Council after a single public meeting this Monday, followed by a (very) brief period where written comments will be accepted by HRM. After that, HRM Council could make some very bad decisions based on this flawed report.

Urgent Action Required!

Council needs to know that the public is committed to having the Regional Park created as promised and do not want to see it undermined for the benefit of a few well-heeled developers.

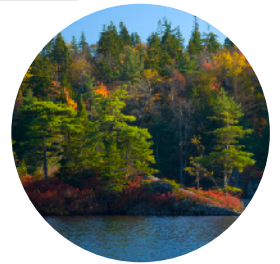
Here's what you can do to help keep this ecologically significant wilderness area safe:

1) Attend the public meeting this Monday

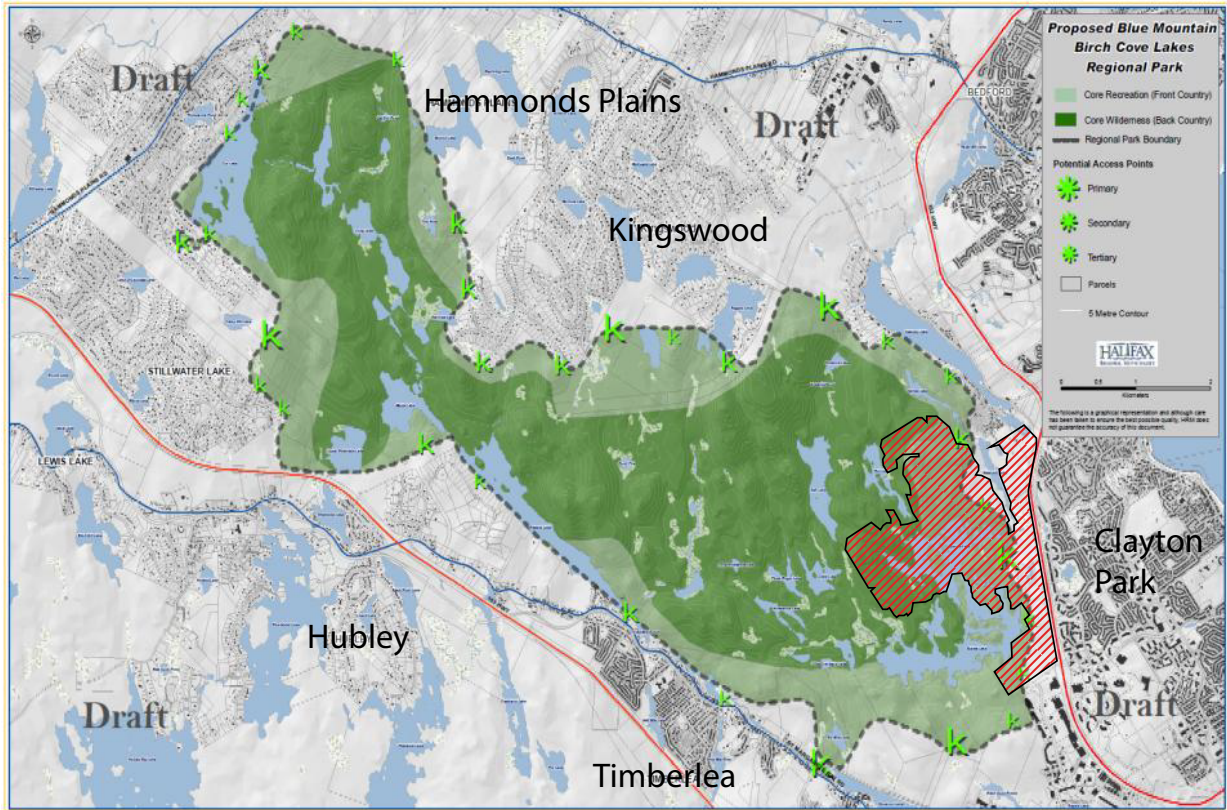
June 20, at 7pm

Future Inns, 30 Fairfax Drive, Halifax (near Bayers Lake)

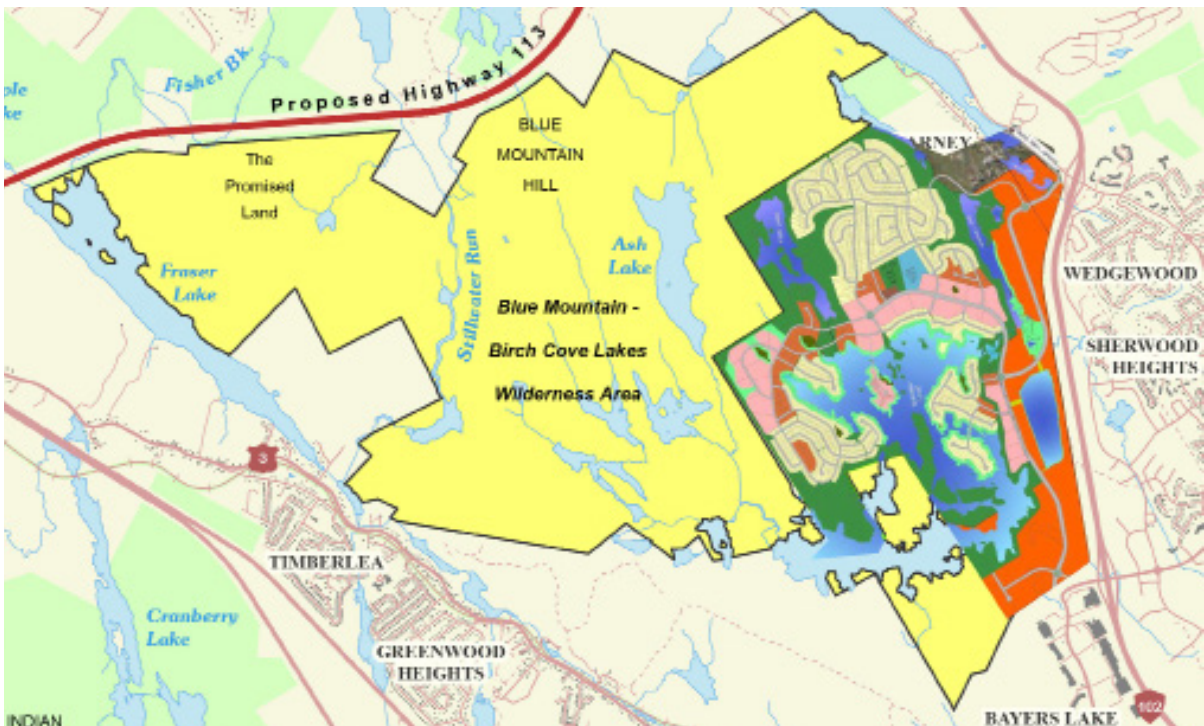
2) Write a brief letter to HRM Council stating your support for the Park as promised in the 2006 Regional Plan and your opposition to any development inside the Birch Cove Lakes area. All feedback must be submitted in writing to the Municipal Clerk by mail, P.O. Box 1749, Halifax, Nova Scotia, B3J 3A5; by fax, 902-490-4208; or **by e-mail, clerks@halifax.ca**. **The deadline for comments is July 4th, 2016.**



The upper map shows the long promised-park (in green) with the developer's plans (in colour) superimposed over it, inside the original boundary of the Regional Park. The lower map shows a zoomed-in view of the Birch Cove Lakes area with the massive sprawl development right up to the edge of the provincially protected Wilderness Area.



 Development proposed in the park.



Development will divide and undermine the Provincial Wilderness Area.