

Attachment to Prof. Karen Beazley's letter to NS Protected Areas, June 27, 2016. Posted on HFN website with permission of Prof. Beazley

The following are maps I've created of Blue Mountain-Birch Cove Lakes, based on Map 11 & App V of the Facilitator's Report

Supplementary key:

Solid green: Core/interior remaining after 1000m buffer/edge zone applied from boundary;

Hatched green: with 300m buffer applied

1km is a scientifically defensible buffer distance from edge effects; a 100-1000m buffer zone is referenced in the Report's Appendices

The first map shows the core area remaining after the buffer/edge zones are applied using the regional park boundary map

[pic 1]

The second shows the core areas after the buffer zones are applied using only the provincially-designated BMBCL WA

[pic 2]

The third map shows the core area after the buffer zones are applied using the developer's proposal, recommended by the Facilitator

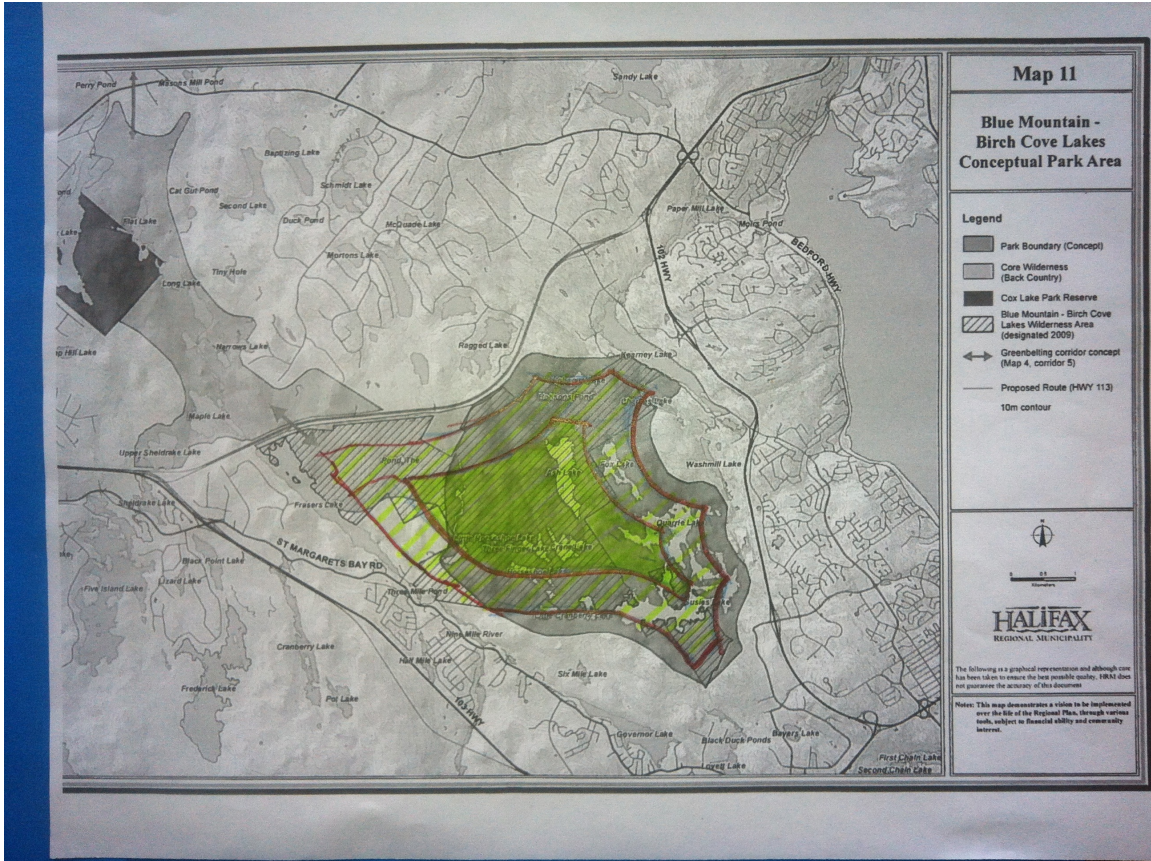
[pic 3]

The regional park boundary has a viable core area. The BMBCL Area and the developer's proposal: not really, especially with 1000m buffer applied inside the boundaries

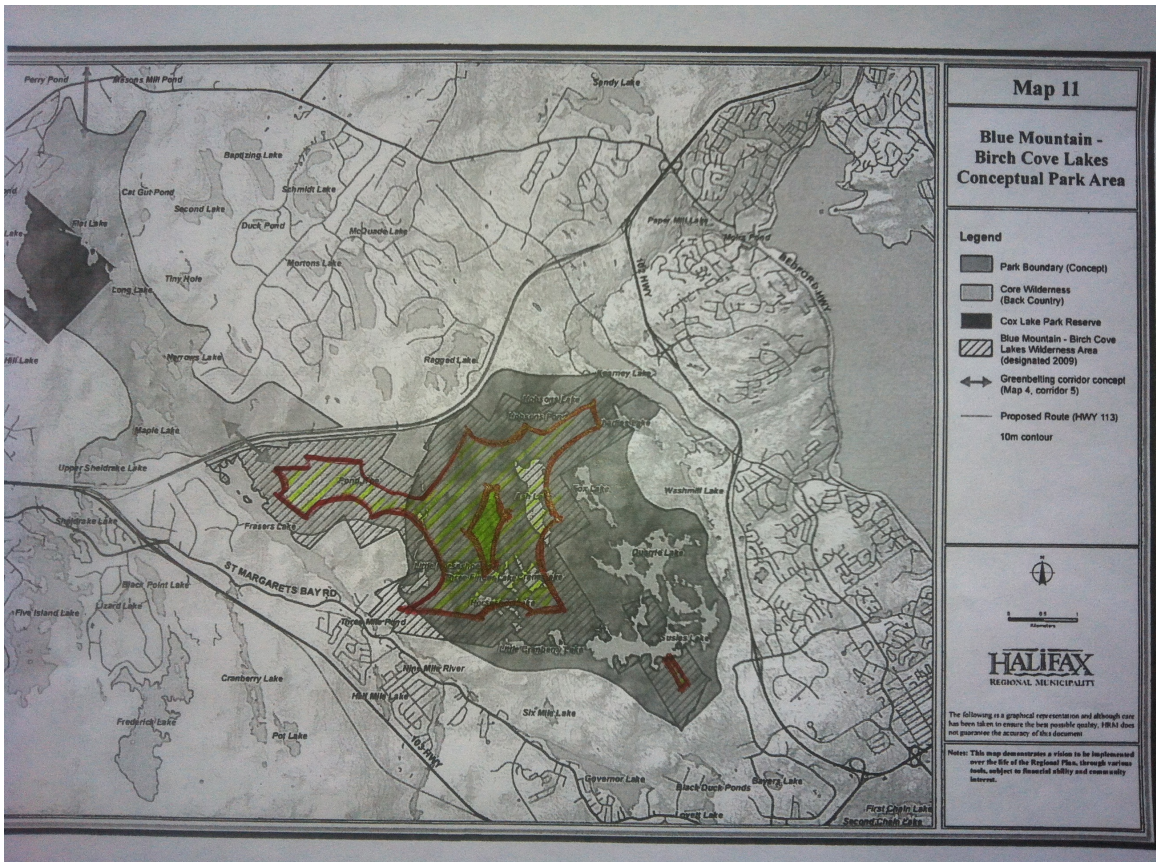
The developer's proposal adds very little core/interior protection, effectively no additional core is provided when a 1000m edge-effect zone is extended into the park

With such minimal protection left if the Report is adopted, there's a very real risk that the province will be able to effectively manage BMBCL as a

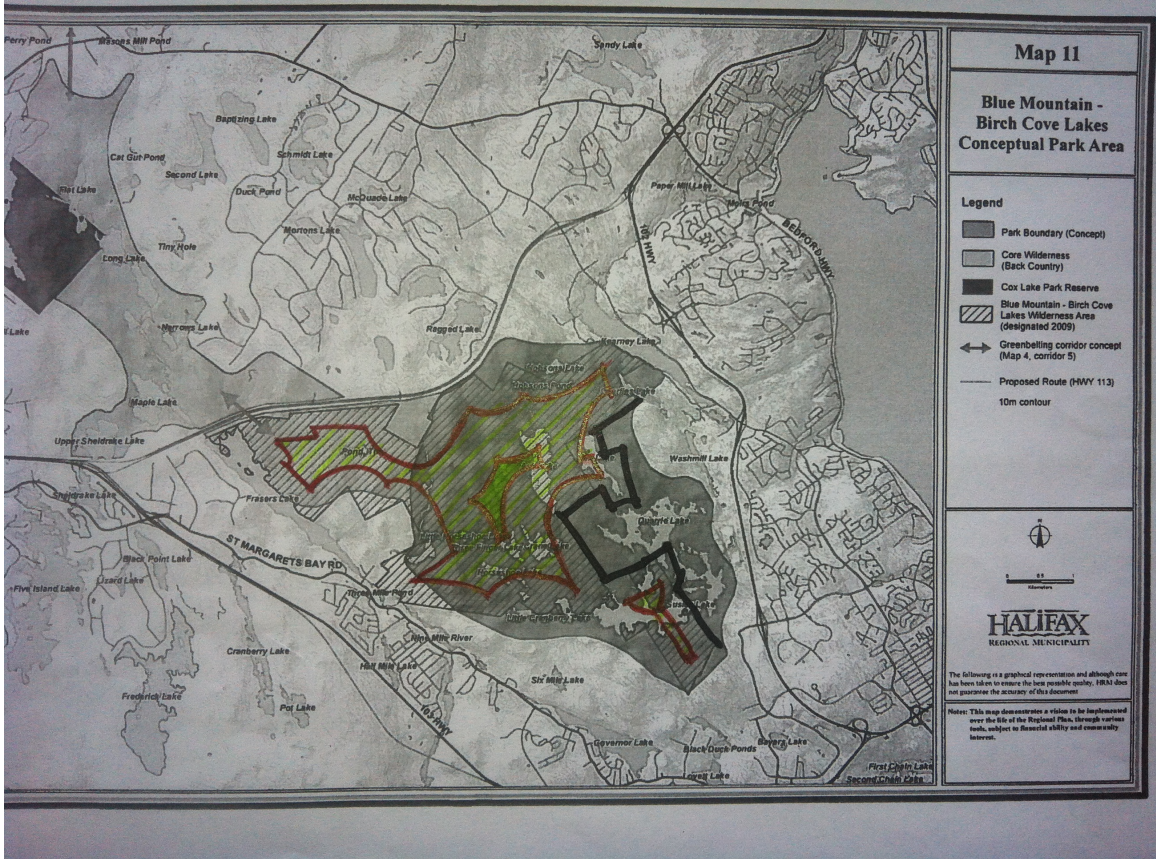
Wilderness Area...



Pic 1



Pic 2



Pic 3